

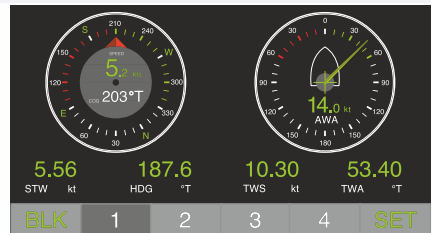


The gateway allows you to see data from an NMEA 2000 marine digital network on a laptop, tablet or smartphone. Colorful web gauges on the built-in website shows vessel data right from a browser. Save on apps, save on additional instrument displays and monitor your boat from your sofa with a smartphone!

The device works as a bi-directional gateway so it is also possible to send messages from PC. The Gateway supports TCP and UDP network protocols (both can be enabled at the same time). For UDP protocol, the number of clients (physical devices or software applications) is unlimited. Compatible with virtually all marine apps including **Navionics**, **MaxSea**, **iNavx** and **OpenCPN**.

Features:

- ▶ has a bi-directional converter between NMEA 2000 and NMEA 0183 protocols;
- ▶ can pass any message (including proprietary) between NMEA 2000 and a PC application by RAW protocol;
- ▶ can act as an NMEA 2000 wireless extender and allows joining of two or more physical networks;
- ▶ works as a Wi-Fi Access Point or can be connected to an existing Wi-Fi network;
- ▶ allows control of Raymarine SeaTalk NG autopilots from NMEA 0183;
- ▶ supports firmware updates over Wi-Fi and diagnostic data logging;
- ▶ free diagnostic software for Microsoft Windows, Mac OS X and Linux is supplied;
- ▶ contains an internal web server for configuration, diagnostics and web gauges hosting.



Built-in web gauges (iPhone 6)



AIS data on SEAIQ Open iPhone app



With SeaTalk NG or N2K Connectors